



# CARTONED POCKET DOOR FRAMES



## Series 1500 COMMERCIAL GRADE POCKET DOOR FRAME for 1-3/8" Door up to 125 lbs.

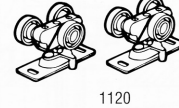
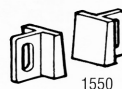
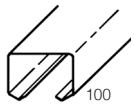
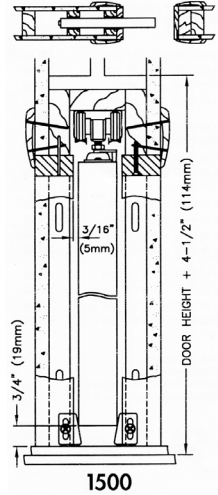
For 2 x 4 construction. Removable aluminium track with convex rails for smooth quiet operation, rust resistant steel reinforced wood split studs, jump proof three wheel (1" dia.) hangers, self adjusting floor anchors, 2'6" and 3'0" headers marked to cut to smaller door sizes. Brass-tone steel parts.

Carton Includes: Door Frame, Track, Tricycle Hangers, Door Guide & Bumper.

<b>1530</b>	3'0" x 6'8" Door (Rough Opening 73" x 84½")	<b>\$106.56</b>
<b>1530-8</b>	3'0" x 8' Door (Rough Opening 73" x 100½")	<b>\$165.29</b>

Also Includes #1575 Adapter for 1-3/4" Door and #1125 Ball Bearing Rollers

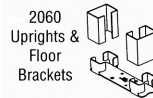
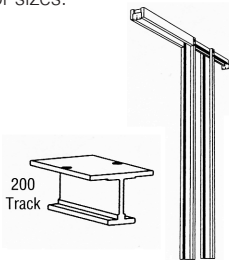
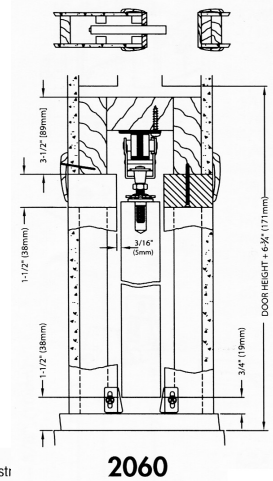
<b>1555-PPK3</b>	Converging Door Kit	<b>\$7.53</b>
<b>1060</b>	Soft Close (For 1500 Series)	<b>\$49.50</b>



## Series 2060 HEAVY DUTY POCKET DOOR FRAME for 1-1/8" to 2-1/4" Doors up to 300 lbs. each. (2" x 6" stud wall)

For 2 x 6 construction, the 2060 features removable aluminum I beam track with 4-wheel ball bearing hangers. Also rust resistant 16 gage all-steel uprights that make the walls as strong as a stud wall. The 2/6 and 3/0 frames are marked for cutting to smaller door sizes.

<b>2060-3068</b>	3'0" x 6'8" Door Heavy Duty Pocket Door Frame	<b>\$303.35</b>
<b>2060-3080</b>	3'0" x 8' Door Heavy Duty Pocket Door Frame	<b>\$342.08</b>
<b>2050-PLBG</b>	Converging Door Kit (For 2060 Series)	<b>\$13.58</b>
<b>2027SD-1</b>	Hardware set for 2060	<b>\$78.80</b>

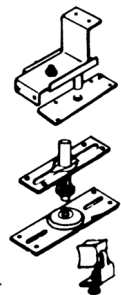
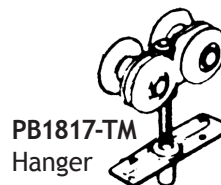


- ✓ All frames fit 2" x 6" stud walls
- ✓ 16 Gage steel studs make wall st as stud walls.
- ✓ 2060 Frames can accommodate doors up to 2 1/4" thick.

## Series 1870 COMMERCIAL DUTY Bi-Fold & Multi-Panel Door Installations For Panels Over 1" Thick and Up to 125 lbs. Ea. (75lbs. For More Than Two Doors To A Jamb)

### 1801 Aluminum Track (1 Piece Needed)

BK1801-72	6' Track	\$42.66
BK1801-96	8' Track	57.60
BK1801-120	10' Track	66.18
BK1801-144	12' Track	94.26
BK1801-192	16' Track	125.29
PB1817-TM	Hanger	23.15
PB1818	Pivot Set	36.85



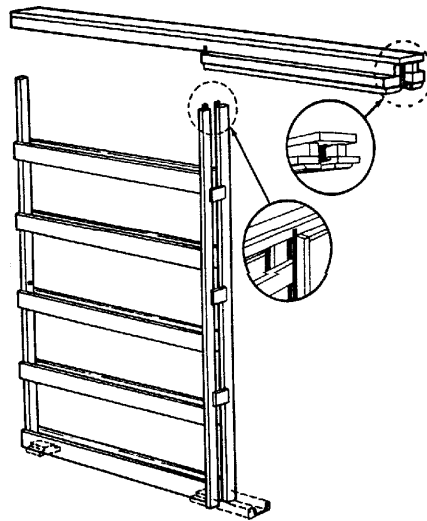
# RW ASSEMBLED POCKET DOOR FRAMES



## Manufactured by RW Specialties Custom Sizes & Species Available

- Clear Split Jam
- **NOTE:** Frames Need Finish Trim, Jamb & Stop.
- **PLEASE NOTE:** A standard Pocket is only 2" and designed for a 1-3/8" door.

A 1-3/4" door may require a custom jamb and/or 2' x 6' wall. Custom charges will apply.



### SELECTION GUIDE

Rough Opening Height  
From Sub Floor - 7'-0"

Commercial Duty - Height  
From Sub Floor - 7'-1"

Single Door Size	Rough Opening Width
2'0" x 6'8"	4'2"
2'4" x 6'8"	4'10"
2'6" x 6'8"	5'2"
2'8" x 6'8"	5'6"
3'0" x 6'8"	6'2"

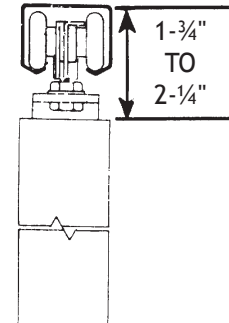
### HEAVY DUTY HARDWARE

Maximum Door Weight: 150 lbs. per door

Heavy Duty 4 wheel #PB1632-BB hardware for doors up to 150 lbs. 4 wheel #1606 hanger has celcon wheels on steel shafts with steel ball bearings for smooth operation and long life. Easy vertical adjustment. Two piece hanger allows for easy door attachment and removal.

### CLEAR SPLIT JAM

SIZE	PRICE
2'0" x 6'8"	\$ 136.25
2'4" x 6'8"	138.03
2'6" x 6'8"	139.65
2'8" x 6'8"	144.90
3'0" x 6'8"	149.10



### COMMERCIAL DUTY HARDWARE

Maximum Door Weight: 250 lbs. per door

Commercial Duty 4 wheel #PB1842-BB hardware for doors up to 250 lbs. Heavy gauge aluminum box track with "V" shaped rails is jump-proof. Hangers have large 1-1/4" diameter celcon wheels on steel shafts with steel ball bearings for smooth operation and long life. Two piece door attachment makes for easy door installation and removal.

### CLEAR SPLIT JAM

SIZE	PRICE
2'0" x 6'8"	\$186.90
2'4" x 6'8"	191.10
2'6" x 6'8"	195.30
2'8" x 6'8"	199.50
3'0" x 6'8"	203.70

