

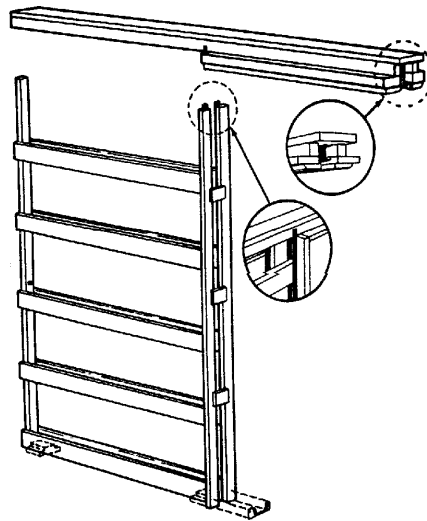
RW ASSEMBLED POCKET DOOR FRAMES



Manufactured by RW Specialties Custom Sizes & Species Available

- Clear Split Jam
- **NOTE:** Frames Need Finish Trim, Jamb & Stop.
- **PLEASE NOTE:** A standard Pocket is only 2" and designed for a 1-3/8" door.

A 1-3/4" door may require a custom jamb and/or 2' x 6' wall. Custom charges will apply.



SELECTION GUIDE

Rough Opening Height
From Sub Floor - 7'-0"

Commercial Duty - Height
From Sub Floor - 7'-1"

Single Door Size	Rough Opening Width
2'0" x 6'8"	4'2"
2'4" x 6'8"	4'10"
2'6" x 6'8"	5'2"
2'8" x 6'8"	5'6"
3'0" x 6'8"	6'2"

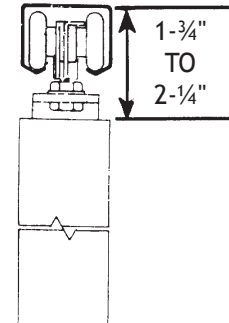
HEAVY DUTY HARDWARE

Maximum Door Weight: 150 lbs. per door

Heavy Duty 4 wheel #PB1632-BB hardware for doors up to 150 lbs. 4 wheel #1606 hanger has celcon wheels on steel shafts with steel ball bearings for smooth operation and long life. Easy vertical adjustment. Two piece hanger allows for easy door attachment and removal.

CLEAR SPLIT JAM

SIZE	PRICE
2'0" x 6'8"	\$ 136.25
2'4" x 6'8"	138.03
2'6" x 6'8"	139.65
2'8" x 6'8"	144.90
3'0" x 6'8"	149.10



COMMERCIAL DUTY HARDWARE

Maximum Door Weight: 250 lbs. per door

Commercial Duty 4 wheel #PB1842-BB hardware for doors up to 250 lbs. Heavy gauge aluminum box track with "V" shaped rails is jump-proof. Hangers have large 1-1/4" diameter celcon wheels on steel shafts with steel ball bearings for smooth operation and long life. Two piece door attachment makes for easy door installation and removal.

CLEAR SPLIT JAM

SIZE	PRICE
2'0" x 6'8"	\$186.90
2'4" x 6'8"	191.10
2'6" x 6'8"	195.30
2'8" x 6'8"	199.50
3'0" x 6'8"	203.70

