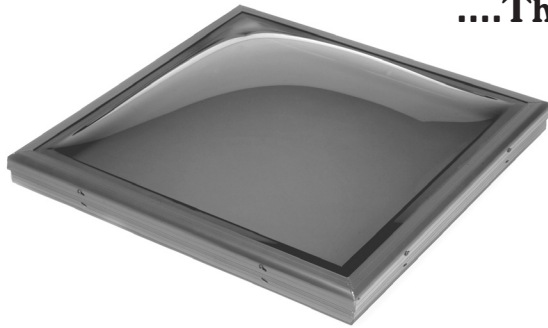


# Non-Venting Acrylic Skylights

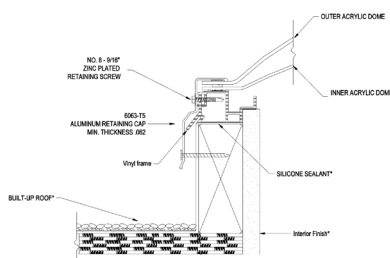
Impact Resistant  
Double Acrylic Domes  
....The Economical Choice.



## Curb Mounted

- ❖ Energy efficient, thermally broken frame for cooler climates
- ❖ Requires site-built wood curb

Skylights are the perfect solution to a dark and dreary living space. They flood a room with as much as five times the light of a traditional wall window of the same size. If you have a room that's not as bright and cheerful as you'd like, add VISTA Skylights and bring in the sun and the sky.

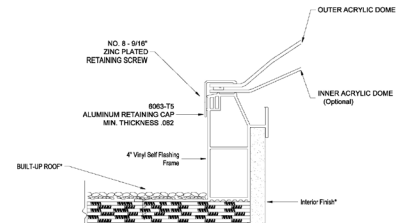


## Self Flashing

Intergrated Flashing  
Easy Installation  
Double Acrylic Domes  
Bronze or Clear Outer Dome  
5 Year Warranty

- ❖ Energy efficient vinyl frames
- ❖ Integral flashing for easy installation on asphalt roofs

Skylights are an attractive, economical lighting alternative, featuring UV-protected acrylic and polycarbonate domes.



**Sizes.**  
Generally, you should have one square foot of skylight for every 20 square feet of floor space. You can achieve this with either one large skylight or several smaller ones.

## CURB MOUNTED

ITEM #	COLOR	INSIDE CURB DIMENSIONS	LIST
ODLEC 2828-C	Clear	22¼" x 22¼"	\$163.98
ODLEC 2828-B	Bronze	22¼" x 22¼"	163.98
ODLEC 2852-C	Clear	22¼" x 46¼"	214.17
ODLEC 2852-B	Bronze	22¼" x 46¼"	214.17

## CURB MOUNTED

Use with these types of Roofing Material:

- Asphalt
- Fiberglass
- Cement
- Clay Tile
- Wood Shake
- Slate or other High Profile

## SELF-FLASHING

ITEM #	COLOR	ROUGH OPENING	LIST
ODLFA 2828-C	Clear	22¼" x 22¼"	\$244.27
ODLFA 2828-B	Bronze	22¼" x 22¼"	244.27
ODLFA 2852-C	Clear	22¼" x 46¼"	297.83
ODLFA 2852-B	Bronze	22¼" x 46¼"	297.83

## SELF-FLASHING

Use with these types of Roofing Material:

- Asphalt
- Fiberglass